

Board of Directors

PRESIDENT

Martha Vockrodt-Moran

VICE PRESIDENT

Judy White

SECRETARY

Karen E. Levy

TREASURER

Kathleen Platt

HORTICULTURE

Ernest H. Rezens

CONSERVATION

Dr. Fern Duvall

PROPAGATION

Richard Nakagawa

Emeritus Director

Euphence F. Vockrodt

An Arboretum for Hawaii

My grandfather, D.T. Fleming, loved to hike in the mountains during his spare time. A favorite spot of his was the Auwahi Forest just beyond Ulupalakua, botanically one of the richest areas in Hawaii, even today, despite its degradation. He witnessed the decline of native plants due to cattle, goats and the aggressive Kikuyu grass, not allowing new seedlings to survive. His dream for retirement was an Arboretum for their protection.

In 1952 he planted the Fleming Arboretum within the protected slopes of the cinder cone Pu`u Mahoe.

As a child I remember the rare *Hibiscus giffardianus*, one of the rarest trees in the Arboretum at the time. The tree slowly faded and died.

Four years ago I became caretaker of Pu`u Mahoe. I knew the Arboretum needed more than just basic maintenance or its trees would just die of old age as did the *giffardianus*. The seeds needed to be harvested, propagated and seedlings outplanted.

The nonprofit Friends of D.T. Fleming Arboretum (FOFA) was created to help fund expenses beyond basic maintenance. FOFA's mission statement: "Preservation through protection, propagation and distribution."

In the last four years we have made great strides. The 50-year-old infrastructure has been restored or replaced. The health of the trees has been upgraded. New species have been planted for a more complete collection of Maui's dryland forest. Greater populations of the rare species have been planted for better cross-pollination and stronger genetics.

Our botanical collection has been shared with nurseries and botanists throughout Hawaii. Seedlings have been used for reforestation projects in Auwahi and elsewhere. We encourage community involvement by sponsoring propagation workshops, volunteer workdays and Arboretum tours. We share the Arboretum and our propagation work worldwide through our website.

FOFA's preservation efforts have been made possible by funding from State, Federal and Hawaii foundation grants and donations by individuals and businesses. It is only through broad community support that we are able to succeed.

This newsletter reports the 2006 activities of FOFA and the commitment to our mission. Thank you to all who have contributed.

Martha Vockrodt-Moran

Martha Vockrodt-Moran, President



Bob Bangerter photo

Ma`o hauhele (*Hibiscus brackenridgei*), a native yellow hibiscus, became The Hawaii State Flower in 1988. Previously, our state flower was the Hibiscus, all colors, all varieties.

Dedicated to Preservation through Protection, Propagation & Distribution

D.T. Fleming Arboretum (808) 878-3240 • Office (808) 572-1097

P.O. Box 101 • Makawao, Maui, HI 96768

www.flemingarboretum.org • email: info@flemingarboretum.org



Fleming Archives photo

Pineapple was harvested in canvas bags until 1946, when the field harvester with boom was developed. In the search for a viable commercial crop, pineapple proved to be the most promising. Fleming transformed the failing Honolua Ranch cattle and coffee operation into a thriving village and successful pineapple industry.

FOFA Board of Directors 2006

Martha Vockrodt-Moran. Arboretum Manager. Profession in Landscape Maintenance and Fine Arts.

Judy White. Non-profit consultant and educator, currently involved in a new independent school in Kapolei.

Karen Ella Levy. Retired commercial property manager. Former president and co-founder of two non-profits in Seattle area.

Kathleen Platt. Retired emergency medical technician. Founder and past president of Women Helping Women. Currently works as an architectural draftsman.

Ernest H. Rezens. Agricultural Professor Emeritus of U of Hawaii/MCC. Now a registered consulting horticulturist and certified arborist.

Richard Nakagawa. Nursery manager at State of Hawaii's Forestry Nursery. Native Hawaiian Plant Society project leader and past president.

Dr. Fern Duvall. Wildlife Biologist, DLNR Division of Forestry and Wildlife, Maui. Responsibilities include invasive species of Maui Nui.

Euphence Vockrodt. Emeritus Director and former caretaker of the Arboretum. Daughter of founder, D.T. Fleming.



Fleming Archives photo

Hukilau (to fish with a seine), Honolua, Maui, early 1900s. Fleming started a commercial Hukilau business at Honolua Ranch investing in boats, nets and an icehouse. The operation ceased in 1955 when the Akule harvest declined below 500 lbs.

IN THIS ISSUE:

An Arboretum for Hawaii	Page 1
Board of Directors & Mission Statement	Page 2
A Monumental Accomplishment	Page 3
Arboretum History	Page 4
Foundation Support	Page 5
Propagation Workshops 2006	Page 6
Projects Paid For by Individual Donations	Page 7
Donations & Gifts in Kind	Page 8-9
In Honor of & Memorials	Page 9
Arboretum News 2006	Page 10
Our Future	Page 11

Cover photo by Bob Bangerter • www.PhotolImagesMaui.com



Fleming Archives photo

A visit to the Lychee orchard in Honokahua Valley, planted 1939. During his years of work for Baldwin Packers Inc. (1911-1950), Fleming introduced new crops to diversify the agriculture "making Maui a better place to live." Today, Lychee is a favored fruit in Hawaii.

Mission Statement

The Friends of the D.T. Fleming Arboretum at Pu`u Mahoe, Inc. (FOFA) exists to sponsor, fund and assist in the protection and preservation of the Fleming Arboretum and its mission to preserve Hawaiian native plants through protection, propagation and distribution.



A Monumental Accomplishment for Hawaii . . .

The First Propagation and Outplanting of the Rare Alani

Currently there are only two mature Alani (*Melicope knudsenii*) in existence. One grows wild in Maui's Auwahi Forest; the other grows at Pu`u Mahoe in the D.T. Fleming Arboretum. The Pu`u Mahoe Alani is the only one that has produced viable seeds. Both trees are in decline. Time is critical.

In 2004, the first two Alani seedlings were planted in the Fleming Arboretum.

In 2005, after successful propagation by diligent nurseries, eight young Alani seedlings were outplanted into Auwahi, their home of origin.

A total of 35 seedlings have been distributed for outplanting on Maui, Oahu, and the Big Island.

"This is our final chance to save these strands of DNA or they are gone forever," says research biologist Art Medeiros.

Last Fertile Tree Breeding Hope

Excerpts from *Sustainable Agriculture* - January, 2006

By VALERIE MONSON, The Maui News

It's a story rare for Hawaii, where hundreds of native species have vanished from the landscape over the generations, never to return again, wiped out by hordes of invasive newcomers that smother, strangle or simply overtake them. The last 30 years, there were fears that the same sad destiny lay in store for the proud Alani, a tree with clusters of ivory flowers and long leathery leaves that when crushed, produced a sweet oil used to scent kapa.

The results have impressed those who for years, have been leading the often futile battle to preserve endangered species.

"It's an amazing thing they did in saving that plant," marvels Rene Sylva, known on Maui as the 'Kumu' of native plants. "We were down to one plant and now it's coming back. This is such good news."

Unlocking the secret to the Alani remains in its early stages. Seeds have been sent to nurseries and research facilities all over Hawaii, as well as the University of Kentucky and the U.S. Department of Agriculture's Natural Seed Storage Lab in Colorado. FOFA receives constant updates from the growers and scientists, filing their reports on FOFA's website, www.flemingarboretum.org.



With the help of Ernest Rezents, consulting horticulturalist and certified arborist, the Pu`u Mahoe Alani has produced viable seed.



Anna Palomino shows off five Alani seedling propagated at Ho`olawa Farms, to be outplanted into a 20-acre enclosure in Auwahi this winter.



Ailene Yeh of the HI Agriculture Research Center in Hilo delivered nine Alani seedlings to Maui in 2006, propagated at her nursery. Some of these seedlings are being used as root stock for grafting research to create young trees of the only two mature Alani in existence.



Auwahi Reforestation Group photo
Alani seeds with beetle damage challenges propagation efforts.



Auwahi Reforestation Group photo
First outplanting of Alani seedlings into Auwahi 2005. Reforestation continues using Alani, Holei, and Ohe from Fleming Arboretum seed.



Fleming Archives photo

David Thomas Fleming, 1881-1955. "A man of vision and action who dedicated his life to the people of Maui and of all Hawaii."

Arboretum History . . .

Excerpts from David T. Fleming, *Man of Vision and Action*, by Mary Ellsperth Fleming.

The great opportunity and challenge of his business career came to David in 1911 when he became manager of Honolua Ranch, the Baldwin estate in West Maui.

Almost overnight, an agricultural industry boomed. Side crops of watermelon, mango, jackfruit and aloe were planted for study into varieties, soils, climates, and methods of cultivation. The most successful crop was pineapple.

Sandalwood, Koa and Teak were planted on the mountainside, with varieties of indigenous trees, which were dying out. In a single decade, a fairly barren cattle ranch was turned into a cosmopolitan community, today known as Kapalua.

David made many trips to strange and beautiful places in foreign lands searching for new and exotic

plants to bring back with him to perhaps contribute to our pleasure or economy.

David always came home more and more intent on exploring unfrequented parts of our island. For him the barren slopes of Haleakala had an irresistible fascination, as also did the luxuriantly tropical valleys of West Maui.

Witnessing the demise of native species, his wish for retirement was an Arboretum for preservation of these endangered species. The noxious weed Pa`a Makani was spreading over the pasture lands of Ulupalakua Ranch. David introduced a parasite which killed the weed. Relieved to be rid of the pest, the Baldwins asked David to select for his own use a piece of land, the best he could find, for his nursery.

The site selected was a picturesque spot Pu`u Mahoe (twin craters) overlooking a magnificent view of the south side of the island. The two adjacent craters had been part of the primeval forest, which is dying, destroyed by the cattle and drought.

Fences, water pipes were installed, a cabin built, then came planting, watering and weeding.

Almost everything that was planted took root and grew. The success of this project earned for David the title of "Maui's genius of plants and soils."

2007

In 1950, the D.T. Fleming Arboretum was a vision of David Fleming to save Hawaii's threatened species. Today, that vision is a reality.

The D.T. Fleming Arboretum at Pu`u Mahoe is Hawaii's oldest and largest native Arboretum. It protects 92 native plant species, 26 of which are rare or endangered. It is almost a complete collection of the Auwahi dryland forest species and a valuable seed bank for their preservation.



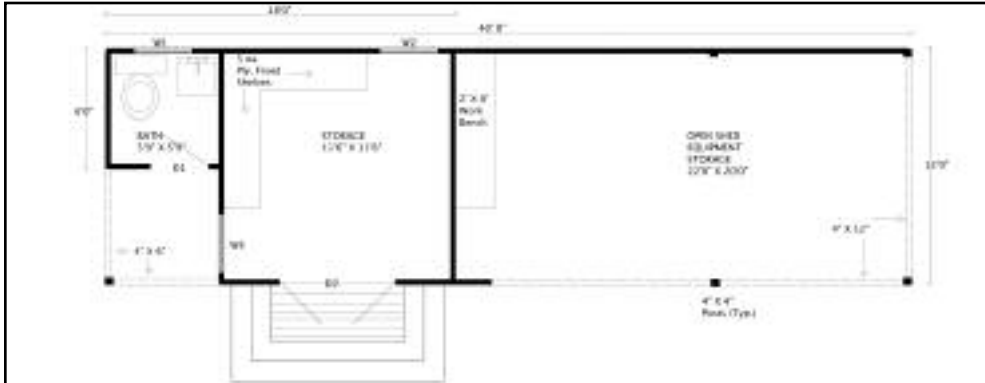
Fleming Archives photos

1950 - "Fences, water pipes were installed, a cabin built, then came planting, watering and weeding."



Foundation Support for Special Projects

Thanks to generous donations by individuals and foundations, the Arboretum will be strong into the future ... an Arboretum for Hawaii with unparalleled heritage.



Preliminary drawing for the proposed Shed/Restroom/Garage/Classroom facility at Fleming Arboretum.

Drawing by Bud Tharpe

2006 Approved Grants

- **“Project Site Mulch”**: \$4,500 matching grant from Maui County Office of Economic Development. *FOFA seeks the remaining funds for this \$9,000 project. Project Site Mulch will transform invasive wattle trees at Pu`u Mahoe into wood-chip mulch, clearing area for native habitat restoration.*
- **Shed /Restroom Design and Permitting**: \$3,500 from Fred Baldwin Memorial Foundation.
- **Shed /Restroom Construction**: \$10,000 from Atherton Family Foundation; \$5,000 from Bank of Hawaii; \$2,500 from A&B Foundation. *FOFA seeks the remaining funding for this \$30,000 project.*

2006 Completed Grants

- **Professional Instructors for Propagation Workshops 2006**: from Kaulunani Dept. of Forestry
- **Upgraded Irrigation System**: from Atherton Family Foundation.
- **Arboretum Inventory & Computer Database with Arboretum Map by Robert Hobby**: from Fred Baldwin Memorial Foundation
- **“Project Mulch” - Mulch purchase and distribution**: from Atherton Family, Cooke, and A&B Foundations



Francisco and Antonio Diaz distribute mulch to 250 native trees in the seven-acre Fleming Arboretum.



John and Helene Steiner-Jackson supply Project Mulch with truckloads of rich composted wood chip mulch.

“Project Mulch” has been a dramatic boost to Arboretum health and our mission for the preservation of Maui’s dryland species. We have worked hard for Arboretum health, constantly challenged by insects and nutrient deficiencies. Composted tree mulch, as naturally occurring in a native forest, was the missing ingredient. The positive results of an organic direction for the Arboretum had been confirmed. Composted mulch has replaced the need for chemical fertilizers. The need for herbicides and insecticides has been reduced. The Arboretum trees are vibrant with health. As the mulch breaks down, it will continue to benefit the Arboretum, providing slow release of natural nutrition to the trees. A stockpile of composted mulch is available for new outplantings and continued mulch distribution.

Propagation Workshops 2006

Annual propagation workshops include the community in preservation of Hawaii's native species. Airlayering and grafting skills are learned to encourage propagation and distribution of these species. The endangered *Hibiscus hanneriae* and the most fragrant *Hibiscus waimeae* are propagated to be outplanted within the community. Propagation workshops fulfill FOFA's mission of preservation through protection, propagation and distribution.



FOFA's 2006 Propagation Workshops included students from Maui Master Gardeners, Nature Conservancy, Maui Nui Botanical Gardens, and Haleakala National Park.



Budding students of Maui Master Gardeners gather around instructors Richard Nakagawa and Terry Nutt.



Judy Daggendhardt has selected a branch of at least 45 degrees, so roots will grow down the stem. If the angle is greater, gravity will cause roots to grow up the stem. Students search for a young, actively growing branch, ideally a terminal branch.



Richard shows first step in airlayering: to cut a slit below a node. Roots will form from the node. The second slit is cut at a distance twice the diameter of the branch below the first slit. Bark between the slits is removed.



Ann Carter cleans the slippery cambium from the cut with a textured rag. If any cambium remains, the tree may heal the cut rather than form roots.



Rooting powder with fungicide is applied to the cut. A generous handful of sphagnum (soaked for at least a week), 1.5 inches thick, is applied to the prepared stem. It is important to achieve an air-tight wrap.



Doug McLeod shows off his completed airlayer. A tin foil square is wrapped around airlayer to create a dark environment for rooting. Hibiscus roots develop in two to three months.

Projects Paid For With Individual Donations

Thanks to generous donations by individuals, FOFA has been able to support progressive projects in 2006, as well as Arboretum basic maintenance and FOFA's operating costs. The following are some of these projects.



Antonio Diaz, Arboretum maintenance.



Cheryl Ambrozic, grant writer.



Linda Pope, FOFA bookkeeper, professional in non-profit accounting.



Evidence of the Erythrina Gall Wasp was discovered at the Fleming Arboretum in January, 2006. Anna Palomino immediately responded at FOFA's request to inject the trees with Merit, a systemic insecticide. Anna has been contracted to provide this service to the Arboretum every 5 months. Above, Anna uses a special kit to inject the trees.



'Ie'ie (*Freycinetia arborea*), propagated by Noah Judson at Orchids of Olinda nursery. FOFA is constantly acquiring plants in preparation for continued outplanting in 2007.



Tai Domen of Ali'ilani Arborcare provides tree-care service at Arboretum. Tai is a Maui boy raised in Kaupo by well-known parents and owners of Kaupo Ranch Store, Linda and Manny Domen. Tai became a Certified Arborist in San Diego, CA. Maui is fortunate to have his quality of work.



Mulch distribution is an ongoing job - redressing trees, expanding their mulch circumference and top-dressing new outplantings with the rich compost. Mulch and initial distribution was financed by grants. Ongoing distribution is paid for by individual donations. Antonio Diaz distributes mulch throughout the Arboretum.



Hog wire aprons were installed along lower trail of Arboretum to keep out baby pigs. Fencing was installed by Terry Quisenberry and Henrick Lyons (Maggie Moran stand-in).

www.flemingarboretum.org

The website www.flemingarboretum.org was created by donations in memory of Jack Vockrodt, who supported the Arboretum for 45 years, from 1957 to 2002. Ongoing updates are funded by individual donations and volunteer time.



With available funding, the Arboretum gets more care. Greg Patterson cleans up under a messy Hau tree.



Terry Reim, webmaster and newsletter producer. FOFA's newsletters are filed in the Hawaii History section of the Univ. of Hawaii Library, Manoa Campus on Oahu.



Donations & Gifts in Kind

There has been overwhelming support for the D.T. Fleming Arboretum and its newly formed non-profit foundation. In acknowledgement and appreciation, FOFA would like to thank our donors for helping to support the Arboretum ... an Arboretum for Hawaii with botanical, cultural and historical significance.

Every bit of support is like a brick in a wall ... important to the whole structure, a long-lasting contribution. The benefits of donations are realized in perpetuity. As donors continue to contribute, their donation status rises to the next level. Donations since January 2006 are noted by stars next to donor names.

Monetary Donations

ALANI - \$5000 & Above

A & B Foundation*
Atherton Family Foundation*
Bank of Hawaii*
Cooke Foundation*
Fred Baldwin Foundation*
Moran, David & Martha*
Pacific Equipment LLC
Vockrodt, Jack & Euphence*

MEHAMEHAME - \$2500 to \$4999

County of Maui*
Kaulunani Urban Forestry*
White, Dan & Judy*

LAMA - \$1000 to \$2499

Fleming, Jim & Joanie*
Holley, Moira
Hughes, Edmund & Patricia*
Levy, Karen*

ILIAHI - \$500 to \$999

Benhow, Eric and Melissa
Camara, Karen*
Carter, Anne
Coons, Fred & Mary
Daniels, John & Michelle Steuremann
Fleming, Barbara
LoBianco, Jim & Mary Jo
Mancini, Paul & Judy
Maui Outdoor Circle*
Platt, Kathleen
Rezents, Ernest & Aleene*
Shields, Rodney
Shotts, Norman & Florence
Vispassana Metta Foundation
Wagner - Rixey, George & Randy
Zussman, John & Patti*

ALA`A - \$100 to \$499

Allan, George & Janet
Anderson, Jeanne
Armstrong, John
Bailey, John & Gordeene
Baldwin, Helen
Bangarter, Bob & Nida
Bangarter, Kathy*
Barr, George & Rusty
Beagle, Paul & Pam
Bedell, Margaret
Bisgard, Judy
Bolte, Jim & Lorie
Brown, Frank & Susan*
Brown, Will & Natale
Chandler, Charlie & Linda
Chenoweth, Art & Jane*
Conger, Rand & Erin
Connell, Emmons & Mary
D'alessandris, David & Carol*
Daequip - Dean Edwards
Davis, Muffie*
De Mane, Rick & Rene
Elsen, Katherine

Erickson, Becky*
Esty, Fred & Mary
Fernandez, Barbara*
Fleming, Andrew
Fleming, Bridget & David
Fleming, John and Nancy
Fleming, Leslie & Kevin Wilcock
Fleming, Maggie
Fleming, Robin*
Fleming, Sarah
Gannon, Bunky & Ginger*
Gerner, Heinz & Margaret
Goldstein, Steve & Fran
Gonsalves, Dennis & Carol
Grant, Paul*
Griffith, Carl
Hartley, David & Shirley
Haynes, James & Dorothy
HI Community Foundation
Higa, Julie M
Hills, John
Hixon, Murray
Holley, Ray and Marian
Horcajo, Bob & Tamara
Jennings, Thomas & Virginia
Jim Sanders Realty Inc
Jones, Jim & Karen
Judge, Jim & Lisa
Judson, Dan - Orchids of Olinda
Kaufman, Buzzy & Gayle Gordon
Kermode, Harry & Millie
Labb, Jerry & Cynthia Conrad
Lane, Ed and Diane
Leong, Edwin / M Leischner*
Linton, Mary Brooks
Lyons, Sam & Camille
Many Star, Alani
Matsuoka, Gunichi & Bess
Maui Assn of Landscape Professionals
Maui Garden Club
Maui Master Gardeners*
Maui Printing Co.
Mauna Ala Hike Club
Mc Carthy, Michael
Mc Elfresh, Keith & Cheryl
Mikolay, Paul & Joan
Millikin, Jimmy
Monroe, Cyrus & Jill
Moriyasu, James & Monica
Mueller-Fitch, Rik & Heather
Native Plant Society
Niess, Jim & Stephanie Austin
Nutt Nurseries - Terry & Tammy*
Okumura, Kazuma
Pefley, Gordon & BJ
Porteus, Alice
Pukalani Plant Co. - James Jones
Purcell, Nancy*
Rea, Robert & Marsha
Reavis, Wayne & Jacqueline
Reeser, Don & Bunnie*
Reiswig, Leland & Lois*
Rice, Paul and Corrine
Robb, Allan & Lundie
Rockwell, Martin & Jo*

Russell, Bill & Elizabeth
Schenk, Doug & Cindy
Schmidt, Richard & Cris*
Schneider, Don & Jayne
Schwab, Tom & Michelle
Scott, Adam & Mary Jane
Seifert, Jean
Seifert, Roger
Shambaugh, David & Ingrid
Shearman, Nancy
Skyrman, Carl & Ingrid
Slipp, Jane
Sugar, Robert & Helen
Tahl, Patric & Alison*
Tavares, James & Helen
Taylor, Elizabeth (Betsy)
Trafton, Bob & Jean
Trail, Marilyn & Dale Papham
Tuell, Richard J
Uhrich, Ann
Warner, Cynthia
Warren, Charlotte
Watanabe, Vernroy (Rick)
Weber, Cleves
Wheeler, Bo & Marcie
Wiese, Mimi
Williams, Ed & Marlene Noble
Wilson, William & Leona
Zabriskie, Margaret*

WILIWILI - To \$99

Adams, Shelly
Apple-Gerry, Michale & Annalee
Austin, Stephanie & Jim Neiss
Babson, Ann
Bailey, James & Roselle
Barton, Sue Ellen*
Bily, Pat and Marcie*
Blake, Mimi
Blodget, Rush & Margaret
Brayton, Tom & Cris*
Burr, Shirley M*
Burton, Cathy
Cameron, Kae
Cameron, Wendy
Chang, Dr Jocelyn
Collins, Mark & Denyse
Conger, Tom & Rici*
Conrad, Kurt & Judith
Correll, Marty*
Cruikshank, Sally & Collen
Darling, David
Davenport, Catherine*
De Jetley, Alberta
Dellaport, Jane
Dickert, Dennis & Pricilla
D'Orange, Alice
Duey, John & Rose Marie
Dunning, John & Doris
Echazabal, Dianne & Jim
Elliot, Marcia & Lew Mc Farland
Fahscholtz, Thomas
Fahsholtz, Chelsea
Fell, Diane

Finnie, Durlyn
 Fleming, John & Barbara*
 Fortman, Joe & Sandy*
 Frankel, Steve & Myla
 Furtado, Ben & Elsie
 Gambonini, George & Margaret
 Gammie, Gay
 Gardner, Carolyn
 Glen, Bruce
 Graydon, Don
 Grundhauser, Jeff & Debbie
 Harada, Hatsuye
 Hazen, Jack & Lorna
 HI Growers Products
 Holter, Lance
 Johnson, Ruth
 Kaia, Joloyce
 Kawahele, Margaret
 Kennedy, Anne
 Kidston, Caird
 Kikuta, Dwight & Lina
 Kimura, Lloyd & Jenny*
 Kline, Hank & Barbara
 Knobel, Chuck & Lenore
 Kurzmack, James & Roni
 Leckie, Jackie & Larry
 Lily, Mary
 Lopes, John & Caroline
 Macknight, Jan
 Martin, James & Jacqueline
 Masters, Kamala & Steve
 Mayer, Dick & Rosily
 Mc Mahon, Scott & Ann
 Meany, Richard & Jo Ann*
 Milovina, Tom & Wendy
 Montagne, Matt
 Morris, Corrine & Spenser Feldman
 Murphy, Laurel
 Murray, Joanne*
 Murray, Lani*
 Nelson, Dick & Eleanor
 Nelson, Monty & Pat
 Nelson, Norman & Linda
 Orr, David
 Osako, Warren & Susan
 Pacheco, Lois (Cookie)
 Parker, Hilary
 Paul, Tammi*
 Plage, Rick*
 Pollock, Robert & Klazine*
 Potts, Norma
 Quinseberry, Terry & Cynthia
 Raymond, Lisa & Keope
 Rice, Martha - Ann
 Robeck, Ray & Judy
 Roberts, Janice
 Roberts, Mark
 Ryan, Bob & Pat
 Ryan, Donna
 Sawyer, Will & Kalima
 Sentinella, Mildred
 Shepherd, Glen & Shirley*
 Shikatani, Gwen
 Sierra Club - Maui Group
 Sly, Stacey & Valerie
 Smith, Joan (Koana)
 St Denis, Roy & Pat
 St John, Skip & Linda Wish
 Stisher, Jackson & Ethelyn
 Susman, Steve
 Tamaribuchi, Kay & Lorraine
 Terada, Hatsue & Frank
 Treeter, Werner & Gertrud
 Treuhold, Charles & Fields, Faye
 Unger, George
 Up Country Electric
 Vail, John & Teresa
 Vainowski, Helga*
 Vega, John


Ventura, Victor & Betty
 Wai Wai Nui Inc.
 Walholm, Tony & Kate*
 Waldow, Neil & Elaine
 Wender, Elaine
 Wheeler, Leon & Barb*
 Wilburn, Duke & Barbara
 Wittbold, Elsa
 Woods, Frank Mrs
 Wordeman, Matt & Ann
 Yonkers, Dora Jane*

Gifts In Kind

Ambrozic, Cheryl - Photography
 Branch Out Tree Service
 Bangerter, Bob - Photography
 - "Virtual Tour"
 - "Pu'u Mahoe Close Up"
 Cameron, Mazie
 - Maui News articles 1935, 1946
 Davis, Muffie - Original Art
 DePont, Paige - Nature books
 Duvall, Fern - Plant Research
 Fleming, Barry & Family
 - Botany books
 Fleming, Jim & Joanie - Gardening tools
 Levy, Karen - Color Printer,
 and Answering Machine
 Monson, Val - News article
 Moran, David - Chainsaw &
 Tractor Work, Fenceline mowing
 Murdock, Bob & Noella - Fencing wire
 Nakagawa, Richard - Rare plant propagation
 Nutt, Terry - Propagation Workshop Instructor
 Quisenberry, Terry - Pig hunting
 Rezens, Ernest - Horticultural Consultations
 Ritchie, Michelle - Original Art
 White, Judy & Dan - 1991 Toyota Camry
 White, Judy - Nonprofit consultant & setup
 Printed by Maui Printing Company, Inc.

In Honor of


Jim & Mary Jo LoBianco
 of Kihei, Maui
 "For their strong support
 of FOFA"
 From Karen E. Levy



Lee & Lois Reiswig
 of Kapalua, Maui
 "In appreciation of their
 generosity, hospitality
 and Aloha spirit."
 From John & Patti Zussman

Michelle Steuermann-Daniels photo

In Memorium



2006
Andrew Heaton Fleming
 1963-2006
 "He loved many outdoor
 activities, including hiking,
 boating and biking. He was very
 meticulous in everything he did.
 Self-taught in plant identification,
 he used his knowledge to help
 create wonderful gardens on
 Thetis Island."

2005
J. Wilcox Brown
 "To Will with love
 With admiration
 & many happy memories"

Marlin Monson
 "If dogs could be saints"

2004
Ward and Barbara Fleming
Mrs. Shizue Okumura
Mrs. Pedro
Mr. Jeffrey Alden Brumfield

Mr. Jack Edward Vockrodt
 "Let his values ...
 what is good, right and fair,
 His zest for life, his generosity,
 Be an inspiration"

2003
Mrs. Alice Fleming
Mr. Zenjiro Higa
Mrs. Vernie Elsen

Bob Bangerter photo

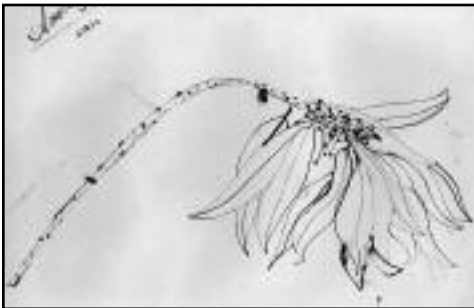
2006 News Highlight

August 2006 - Film about the D.T. Fleming Arboretum goes on National Tour. In May, Elliot Cost won the Maui County Short Film/Documentary Award for his video "D.T. Fleming Arboretum." His winning entry represented Maui at the Sister Cities International Competition in Washington, DC. His video was selected as one of the 14 entries out of 85 international entries to be shown nationally. Elliot is a high school student at Seabury Hall on Maui, son of internationally known artist Curtis Cost. See our website to view this film.



Rob Ratkowski photo

FOFA sponsors Native Plant Art Contest for Kamehameha High School students. See FOFA's website for winning images.



"Naio - False Sandalwood" by Anuhea Aquino



"Ma'o hauhele" by Micah Spencer



"Native Spanish Needle" by Briana Fujimoto

Snake sightings in Fleming Arboretum. The Island Blind Snake (*Ramphotyphlops braminus*), Hawaii's only land snake, was discovered in 1930, accidentally introduced from the Phillipines. This harmless, beneficial snake, the size of an earthworm, eats ants and termite pupae. Island Blind Snakes are all females, the only known parthenogenic snake, which means their eggs develop without fertilization. They are all either sisters, mothers or aunties.

FOFA now recycles. FOFA received a thoughtful and needed gift from Michelle Steuerman-Daniels of custom-made recycle baskets. Preservation of our native species goes hand in hand with caring for the environment.



Scruffie, a recent Maui Humane Society adoption, joins the Arboretum Peacock Patrol. (L-R) Slim, Ope, Maggie, Scruffie.



Euphence Fleming Vockrodt receives Volunteer of the Year Award 2006. "Euphie," daughter of D.T. Fleming, and her late husband Jack Vockrodt, maintained the Arboretum for 45 years. She continues to care for the Arboretum every Friday. "Good enough is not good enough" for Euphie. She is a perfectionist in her work.



Our Future



Kaunoa senior citizens assemble for a tour. D.T. Fleming was a community minded man who created an Arboretum with botanical, cultural and historical significance ... an Arboretum for Hawaii and its people.

Wish List 2007

- Funding for monthly tour guide knowledgeable in botany and Hawaiian culture.
- Funding for Volunteer Work Day trainer/manager.
- Certified arborist/climber for pruning Arboretum's tall natives.
- Matching funds for "Project Site Mulch" to transform invasive wattle into nutritional, composted mulch, clearing more area for native reforestation.



The Fleming Arboretum is a classroom for Kamehameha School students with instruction by internationally known artist Robert Kushner (R). The day included a tour of the Arboretum learning cultural uses of Hawaii's native plants, then drawing them. The class was organized by Hui No`eau Visual Arts Center and instruction paid for by a generous donation from the Laila Art Fund.

Vision for the Future

To restore Pu`u Mahoe back to a native forest with natives competing with each other, rather than invasive, alien species... with upper-, middle- and lower-story dryland species amongst a carpet of native grasses and ground covers ... a habitat for native birds and insects ... a "vignette" of primitive Hawaii.



Wiliwili - planted 1952 at Fleming Arboretum. A new pest, the Erythrina Gall Wasp, is devastating Wiliwili throughout Hawaii. The Fleming Arboretum Wiliwili are given regular cambium injections of systemic insecticide, Merit. Their condition proves this treatment helps to subdue the wasp until a biological control is discovered.



Native Floral Arrangement from D.T. Fleming Arboretum. A tour of the Fleming Arboretum shares attractive combinations of native plants for landscaping, as well as flowers and foliage for floral arrangements and lei ... demonstrating a great potential for native flora in Hawaii's agriculture and tourist industry.



Auwahi Reforestation Group photo Bob Cabin with an Alani seedling in Auwahi, December 2005. With the first germination and outplanting of one of our rarest trees, the Maui Alani, back into the Auwahi forest, we have taken the first step to save this species from extinction. Much work lies ahead before we call our efforts a success. What is a success is the momentum that has been created to continue this work.



P.O. Box 101
Makawao, HI 96768



Ohia Lehua by Michelle Ritchie

**Friends of D.T. Fleming Arboretum at Pu`u Mahoe
(FOFA)**

*Dedicated to Preservation through Protection,
Propagation & Distribution*

Name: _____

Address: _____

Phone: _____

I would like to help FOFA and its mission:

____ I would like to volunteer in the Arboretum.

____ Enclosed is my tax-deductible donation payable to FOFA.

____ Please add my address to newsletter mailing list.

Thank you for your interest and support.

Please mail to:

Friends of D.T. Fleming Arboretum
P.O. Box 101,
Makawao, HI 96768

FOFA is an equal opportunity provider.

Tours are available to those interested on the last weekend of each month. Come be a part of our exciting new projects. Call 808-572-1097.

PLACE
STAMP
HERE

